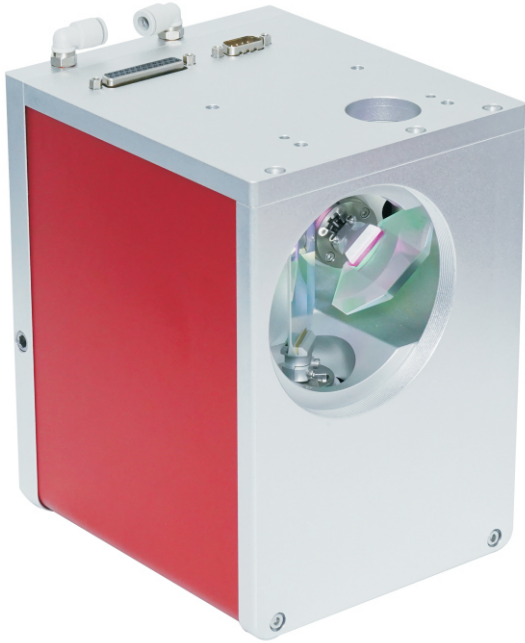


产品型号：**SS-30-II** (2D SCAN)



**SS-30-II** 二维扫描振镜是在**SS-30**产品的基础上进行升级的一款产品。  
The model SS-30-II is the advanced product based on SS-30.

更低的振镜功耗，更低的振镜温度漂移。  
Lower power loss and lower drift.

**SS-30-II** 二维扫描振镜主要应用QCW焊接，光纤传输焊，复合焊，CO2打标和切割等。  
SS-30-II is mainly used for QCW welding, fiber transmission welding, compound welding, CO2 marking and cutting.

## 应用领域

- 激光打标
- 焊接
- 激光切割
- 激光钻孔

## Typical Applications

- Laser Marking
- Laser Welding
- Laser Cutting
- Laser Drilling

## 技术参数 (Specifications)

## SS-30-II

入射光斑 (Aperture)	30mm
跟随误差时间 (Tracking error)	580us
打标速度 (Marking speed)	0.5 m/s
定位速度 (Positioning speed)	3.0 m/s
重复定位精度 (Repeatability)	<20urad
运行8小时以上漂移 (8hours drift)	<0.3 mrad
非线性 (Nonlinearity)	<5mrad
光学扫描角度 (Scan angle)	±0.35 rad
供电需求 (Power requirements)	±15V DC 3A
接口 (Interface)	数字 (Digital) XY2-100 模拟 (Analog) ±5V
工作温度 (Operating temperature)	25°C ±10°C

(All angles are in optical degrees) \*F-theta f=160mm\*

## 规格型号

## 描述

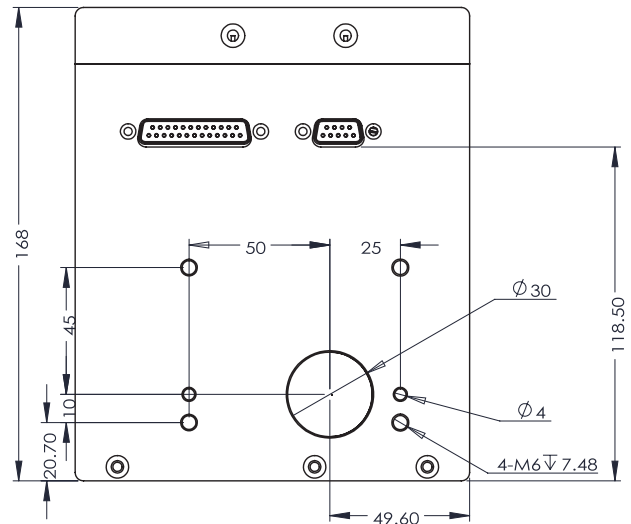
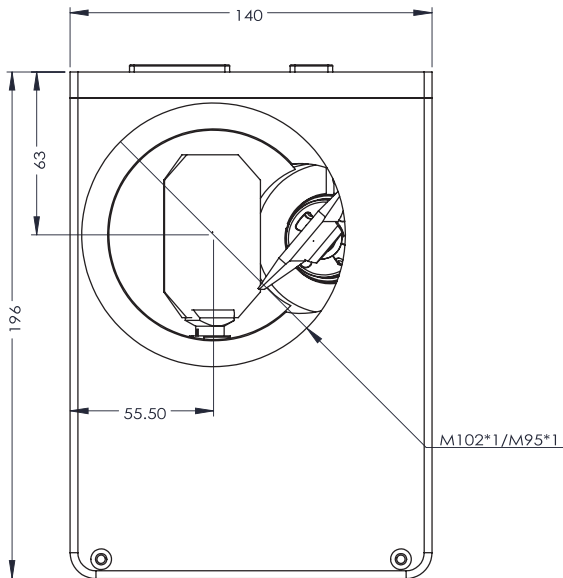
### 10600nm

SS-30-10600-DA-II	反射波长10600nm	数字digital
SS-30-10600-A-II	反射波长10600nm	模拟analog

### 1064nm

SS-30-1064-DA-II	反射波长1064nm	数字digital
SS-30-1064-A-II	反射波长1064nm	模拟analog

## 机械尺寸 (单位mm) (Dimensions)



## 接口定义 (Interface)

